

# SIMPLE SCIENCE

## Bessbug Experiment PreK-1st



### TEACHER'S GUIDE

*Do your bessbugs like a dark or light habitat? Find out!*

**Standards** Science: Ability to do scientific inquiry; understanding about scientific inquiry  
Life Science: Characteristics of organisms; organisms and environments

**Materials** Two bessbugs, black construction paper, white paper, tape, a shallow box or box lid

#### *Safety Tips for Handling Bessbugs*

Bessbugs don't bite! Bessbugs travel slowly! Wash your hands **BEFORE** and **AFTER** handling bessbugs, for your safety and for theirs. Lift bugs by their abdomens (back section). To keep them from running off, lay bugs belly up in a shallow box. Be gentle. Don't rush. You might enjoy how a bessbug feels walking in your hand.

**Steps** Divide your box into two habitats:  
1. Cover one side with black construction paper to make a dark cave.  
2. Line the other side with white paper to make a light open space.

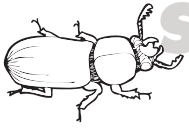
**Definition** The word **habitat** means the place an animal (or plant) likes to live—the place that is natural for its life and growth. Most animals like one kind of habitat more than other kinds. Frogs like wet habitat, like ponds or rainforests. Ladybugs like to live in dry, leafy plants. Rabbits like to live in grassy places or forests, and they like to make tunnels and nests underground. Monkeys like to live in forests, high up in trees.

**Predict** What do you think the bessbugs will do when you put them in the box? Will they like the light, open habitat or the dark, covered habitat?

**Test** Place both bessbugs on the light side, at the end of the box.

**Observe** Watch and see what the bugs do. Where do they go? Do they stay there?

**Conclude** Did the bessbugs like the light or the dark habitat best?



### *Do your bessbugs like a dark or light habitat? Find out!*

**Materials** Two bessbugs, black construction paper, white paper, tape, a shallow box or box lid

#### *Safety Tips for Handling Bessbugs*

Bessbugs don't bite! Bessbugs travel slowly!

Wash your hands **BEFORE** and **AFTER** handling bessbugs.

Be gentle. Don't rush.

**Steps** **Divide your box into two habitats:**

1. Cover one side with black construction paper to make a dark cave
2. Line the other side with white paper to make a light open space.

**Predict** *What do you think the bessbugs will do when you put them in the box?*

\_\_\_\_\_

*Will they like the light, open habitat or the dark, covered habitat?*

\_\_\_\_\_

**Test** **Place both bessbugs on the light side, at the end of the box.**

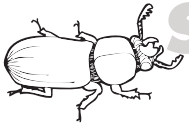
**Observe** **Watch and see what the bugs do.**

*Where do they go? Do they stay there?*

\_\_\_\_\_

**Conclude** *Did the bessbugs like the light or the dark habitat best?*

\_\_\_\_\_



# SIMPLE SCIENCE

Bessbug Experiment PreK-1

Name \_\_\_\_\_

*Do your bessbugs like a dark or light habitat? Find out!*

Did the bessbugs like the light or the dark habitat best?

Draw where the 2 bessbugs went.

Light Habitat

Dark Habitat